

Stainless Steel Multi-Purpose Flow Indicator



Introduction

This product has been developed to enable industry to standardize on a rugged and versatile flow indicator that will satisfy most requirements within pipe sizes 1/4" to 1 1/2".

Operation

On a "No Flow" condition the PTFE ball remains hidden in the body socket. With flow the ball becomes visible in the socket at rates from 0.3 litres / minute. As the flow rate increases the ball leaves the socket and moves freely in the large glass dome (providing positive indication of flow from a considerable distance). The indicator must be installed horizontally with glass dome positioned upwards.

Application

The combination of stainless steel, PTFE and borosilicate glass enables this competitively priced flow indicator to be applied to process and corrosive liquids, as well as to cooling and lubricating applications. This multi-purpose flow indicator can also be used on condensate and flow of gas, air, etc. Apart from flow, the color and condition of liquids can also be observed.

Specifications

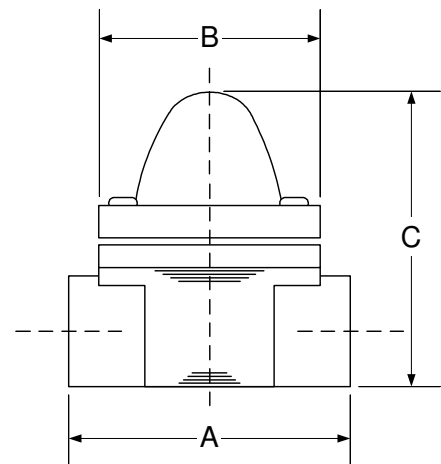
Model	SBS-	025	038	050	075	100	150
Connection:	NPTF	1/4"	3/8"	1/2"	3/4"	1"	1 1/2"
Flow Requirements:	Water						
Operational Minimum:	Litres / Minute	0.3	0.3	0.3	2.5	4.0	11.0
Becomes Visible at:	Litres / Minute	1.5	1.5	1.5	5.0	8.0	23.0
Pressure Drop:	Water						
At Velocity of 2 meter / sec:	PSIG	1.5	1.8	2.25	3.0	3.0	4.5
Maximum Working Temperature:	°C	200	200	200	200	200	200
Maximum Working Pressure:	PSIG	240	240	240	240	240	240
Weight Net:	lbs	1.6	1.6	1.5	3.0	2.8	5.5

Construction Materials

Body:	Stainless Steel BS 1504-316-C16
Clamp Ring:	Stainless Steel BS 970-302-S25
Sight Ball:	PTFE 'Teflon'
Glass Dome:	Annealed Borosilicate
O-Ring:	Viton
Gasket:	Klingersil C-4400
Fasteners:	Stainless Steel

External Dimensions (in millimeters)

	Size	1/4"	3/8"	1/2"	3/4"	1"	1 1/2"
A	(overall length)	76	76	76	89	89	118
B	(width of clamp ring)	60	60	60	60	60	70
C	(overall height)	81	81	81	100	100	126



Ordering Details

Size	Description	Model	Spares	
1/4"	St. St. Ball Flow Indicator	SBS-025	PTFE Sight Ball	1/4" - 1"
3/8"	St. St. Ball Flow Indicator	SBS-038	PTFE Sight Ball	1 1/2"
1/2"	St. St. Ball Flow Indicator	SBS-050	Glass Dome	1/4" - 1"
3/4"	St. St. Ball Flow Indicator	SBS-075	Glass Dome	1 1/2"
1"	St. St. Ball Flow Indicator	SBS-100	Gasket Set	1/4" - 1"
1 1/2"	St. St. Ball Flow Indicator	SBS-150	Gasket Set	1 1/2"
				SBS-BALL1
				SBS-BALL-2
				SBS-DOME-1
				SBS-DOME-2
				SBS-GSK-1
				SBS-GSK-2

Muis Controls Ltd. - Flow Meters - Flow Controls

10610 - 172 Street, Edmonton, AB, Canada T5S 1H8
 Ph +1-780-486-2400 Fx +1-780-486-2500 Toll Free 1-800-661-8823
www.muiscontrols.com info@muiscontrols.com