



High Pressure
Liquid
Flow Monitors

Code	Style
B	Basic In-Line Flow Monitor for Liquids
H	High Temperature (400°F) In-Line Flow Monitor for Liquids
J	High Temperature (600°F) In-Line Flow Monitor for Liquids
M	Flow Alarm In-Line Flow Monitor for Liquid (1 Adjustable Flow Switch)
N	Flow Alarm In-Line Flow Monitor for Liquid (2 Adjustable Flow Switches)
R	Flow Transmitter In-Line Flow Monitor for Liquid (4-20 mA DC)

Code	Size Code (Match Flow Range to Size Code from Tables Below)
2	1/8 to 1/4 inch
3	1/4 to 1/2 inch
4	3/4 to 1 inch
5	1 1/4 to 2 inch

Code	Material (Flow Tube and Connections)
A	Aluminum
B	Brass
S	Stainless Steel

Code	Pressure Rating
6	3500 PSIG Maximum (Aluminum and Brass only)
7	6000 PSIG Maximum (Stainless Steel only)

Code	Fluid Media
H	Hydraulic Oil (0.873 Specific Gravity)
W	Water (1.0 Specific Gravity)

Code	Connection Size - Code from Table Below
D	30

Code	Flow Range - Code from Table Below
D	30

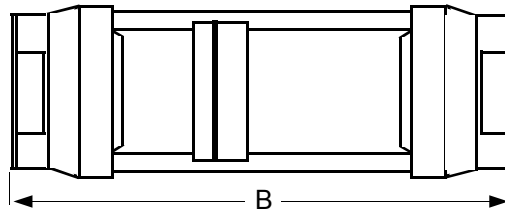
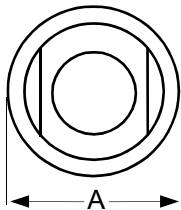
B 4 S - 7 W D - 30 ◀ Typical Model Number

Features

- Mount in any orientation (horizontal, vertical or inverted).
- Spring loaded variable area annular orifice metering disk.
- Sharp-edged orifice provides excellent viscosity stability to 500 SSU.
- High pressure operation to 6000 PSIG.
- High temperature flow monitors have Pyrex glass window tube and Teflon window seals.
- Hydraulic oil monitors available with calibrated scales

Options

- Optional connection ports available in SAE or BSP threads.
- Some bi-directional flow models are available.
- Optional O-ring seals include EPR, Aflas or Kalrez.
- Direct reading scales are available to correct for specific gravity and engineering units.



Dimensions

Size Code	A	B	Port Sizes
2	1 1/4" (32 mm)	4 13/16" (122 mm)	NPTF: 1/8", 1/4"
3	1 7/8" (48 mm)	6 9/16" (167 mm)	NPTF: 1/4", 3/8", 1/2"
4	2 3/8" (60 mm)	7 5/32" (182 mm)	NPTF: 3/4", 1"
5	3 1/2" (90 mm)	10 1/8" (258 mm)	NPTF: 1 1/4", 1 1/2"
5	3 1/2" (90 mm)	12 5/8" (322 mm)	NPTF: 2"

Flow Ranges for Liquid

Size Code	Oil or Water	Range Code
2 & 3	0.05 - 1 USGPM	01
3 only	0.1 - 1 USGPM water	
2 & 3	0.2 - 2 USGPM	02
4 only	0.2 - 2.6 USGPM	
3 only	0.5 - 5 USGPM	05
4 only	0.5 - 5 USGPM	
3 & 4	1 - 10 USGPM	10
3 & 4	1 - 15 USGPM	15
4 only	2 - 20 USGPM	20
4 & 5	2 - 25 USGPM	25
4 only	3 - 30 USGPM	30
4 only	4 - 40 USGPM	40
4 only	5 - 50 USGPM	50
5 only	5 - 50 USGPM	
5 only	8 - 75 USGPM	75
5 only	10 - 100 USGPM	88
5 only	15 - 90 USGPM water	
5 only	20 - 150 USGPM	99

Connection Size

Code	Port	Size Code
I	1/8" NPTF	2 only
S	1/4" NPTF	2 & 3
A	3/8" NPTF	3 only
B	1/2" NPTF	3 only
C	3/4" NPTF	4 only
D	1" NPTF	4 only
K	1 1/4" NPTF	5 only
L	1 1/2" NPTF	5 only
M	2" NPTF	5 only

Muis Controls Ltd. - Flow Meters - Flow Controls

29 Riel Drive, St. Albert, Alberta, Canada T8N 5C6

Ph +1-780-459-7080 Fx +1-780-459-7085 Toll Free 1-800-661-8823

www.muiscontrols.com info@muiscontrols.com

Performance

Measuring Accuracy:	±2.5% of full scale in the centre third of the measuring range; ±4% of full scale over the entire scale range
Repeatability:	±1% of full scale
Flow Measuring Range:	0.05 - 150 GPM (0.2 - 560 LPM)
Max. Operating Pressure:	Aluminum / Brass monitors: 3500 PSIG (240 bar), Stainless Steel monitors: 6000 PSIG (410 bar) If used in compressed gas service, limit aluminum and brass flow monitors to 600 PSIG and stainless steel flow monitors to 1000 PSIG.
Max. Operating Temperature:	B, M, N and R flow monitors - 240°F (116°C) H high temperature flow monitors - 400°F (204°C) J high temperature flow monitors - 600°F (316°C)
Pressure Differential:	See graphs
Standard Calibration Fluids:	Oil monitors: DTE 25 @ 110°F (43°C), 0.873 sg Water monitors: tap water @ 70°F (21°C) 1.0 sg

Standard Materials of Construction

Meter Body	Aluminum	Brass	304 Stainless Steel
O-Ring Seals	Buna-N	Buna-N	Viton
Transfer Magnet	Teflon Coated Alnico		
Floating Orifice Disk	Stainless Steel		
Window Tube	Polycarbonate (Pyrex with code H or J)		
Window Seals	Buna-N (Teflon with code H or J)		



Series V4 Paddle Type Flow Switches



Also Available from Muis Controls



Battery Powered Stainless Steel Turbine Flow Meter

Heavy Duty Industrial Sight Flow Indicators



Battery Powered Digital Turbine Flow Meters