



Sight Flow Indicators



Flow Rate Indicators (Rotameters)



Turbine Flow Meters



Positive Displacement Flow Meters



www.muiscontrols.com

29 Riel Drive, St. Albert, Alberta, Canada T8N 3Z2

Phone 780-459-7080 Toll-Free 1-800-661-8823

info@muiscontrols.com

Muis Controls has been supplying quality Flow Indicators, Turbine Flow Meters, Sight Flow Indicators, Positive Displacement Flow Meters and Rotameters to industrial markets since 1981. In our 33rd year, we continue "To supply quality industrial flow indicating and monitoring products at fair prices with good and reliable deliveries." We know our varied products well and use this knowledge to help you select the right product for your application. Once selected, we aim to deliver on time, and this is where our extensive inventory backs us up. We are proud of our inventory, but when we cannot deliver out of stock, we are able to draw on multiple suppliers to assist us in meeting your delivery needs.

If you are pleased with our service and find that we live up to your expectations, we will be pleased to receive your repeat business. We would also appreciate any referrals to co-workers and other business associates. If you find that we fall short of your expectations, please call our President, Bill Muis, directly at 1-800-661-8823 to express your concern. We will do all we can to set things right. Any suggestions for improvement are welcome.



FLOW METERS · FLOW CONTROLS



1-800-661-8823

[HOME](#)

[PRODUCTS](#)

[DOWNLOADS](#)

[ABOUT US](#)

[CONTACT US](#)

May 21, 2014



Sight Flow Indicators



Flow Rate Indicators



Turbine Flow Meters



Positive Displacement Flow Meters



[\[Home\]](#) [\[Products\]](#) [\[Downloads\]](#) [\[About Us\]](#) [\[Contact Us\]](#)

Questions or comments about this site? Please email info@muiscontrols.com
© 2001-2014 Muis Controls Ltd.

www.muiscontrols.com

Phone 780-459-7080

Toll-Free 1-800-661-8823

info@muiscontrols.com

It is our goal to be your preferred source for sight flow indicators, rotameters, turbine flow meters, and positive displacement flow meters. To achieve this goal, we focus our efforts on maintaining excellent product knowledge, product selection, and availability (inventory).

Knowledge

At Muis Controls, in-depth knowledge of our products, and the various applications in which they will work for you, is of prime importance. We can assist you with the sizing and selection process, so that the flow indicator or flow meter selected best fits your intended purpose.

Selection

Our broad selection of flow meters and flow indicators allow us to service a wide variety of industries who need to measure the flow of liquids and gases. You will have your own unique applications, so the right product is selected based on your criteria.

Availability (Inventory)

“How soon can I get it?” We’re committed to fast delivery. We carry hundreds of uniquely different models and designs of flow meters and flow indicators in stock. In addition, we carry a wide variety of parts to enable us to build hundreds of other configurations. We have also aligned ourselves with some of the best manufacturers in the industry. Through their inventory and manufacturing plants we are often able to supply flow products at better than industry standard delivery times.



Flanged Rotor Style Sight Flow Indicators



CRN
All Canadian
Provinces and
Territories

- Sizes from ½" to 12", 150# and 300# ANSI
- Sizes from ½" to 8", 600# ANSI
- Available with METAGLAS® safety windows

A window into your process!

- Sight Flow Indicators allow you to observe your process safely while giving visual confirmation of fluid flow, colour, and clarity.
- Materials of Construction include: Bronze, Carbon Steel, 316 Stainless Steel, Teflon Lined and Alloys such as Hastelloy C, Monel, Alloy 20, etc.
- Available in threaded or flanged styles with operating pressure up to full 600# ANSI ratings.
- Sight Flow Indicators are available with CRN registration in all Canadian Provinces and Territories.

Low Cost Sight Flow Indicators



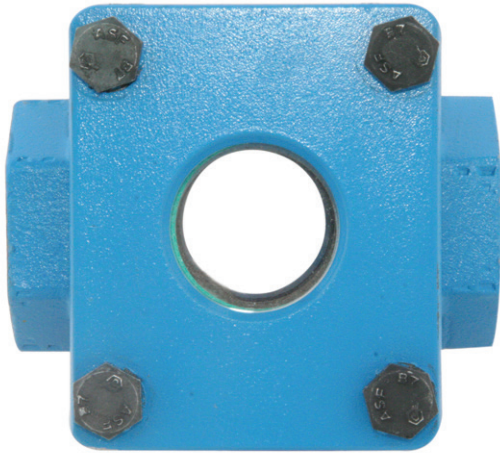
- Monitor sample, coolant, lubricant and seal flush flows
- Available in window styles, ball and spinner dome styles

General Service Sight Flow Indicators Flanged and Threaded



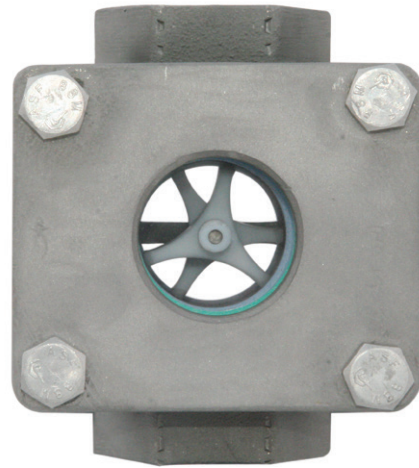
- Sizes from ¼" to 12"
- 316 SS and Carbon Steel

Plain Style



- Visually observe fluid colour, clarity or presence
- Install in any orientation

Rotor Style



- Rotor confirms fluid movement in clear to dark fluids
- Install with flow in any direction

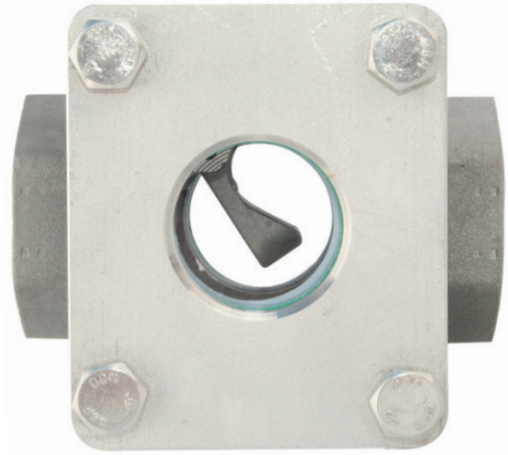
CRN
All Canadian
Provinces and
Territories

Drip Tube Style



- Monitor distillation flows
- Drain monitoring and leak detection

Flapper Style

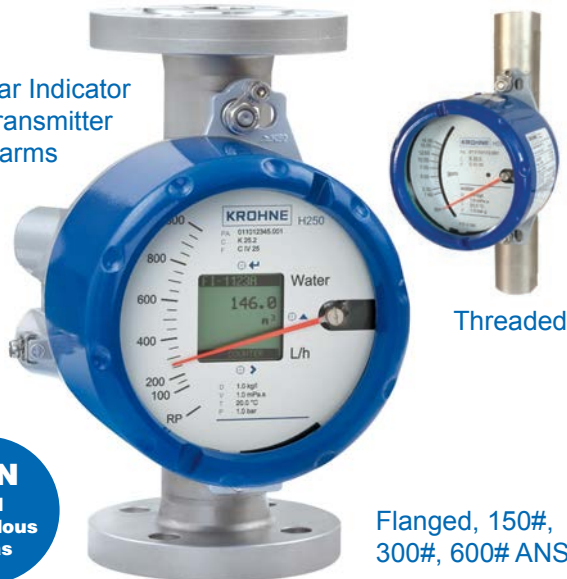


- Flapper angle indicates relative flow rate
- Suitable for liquid and gas flows (gas flapper)

6 Flow Rate Indicators (Rotameters)

Krohne Metal Tube Rotameters

Modular Indicator with Transmitter and Alarms



CRN
and
Hazardous
Areas

- Safe flow rate indication of high pressure / temperature fluids
- Standard models available for vertical up, horizontal, and vertical down flow

Simple, Reliable Flow Rate Indication

- Simple, reliable flow measurement and indication of liquid, gas or steam flow
- Provides operations personnel with a quick confirmation of flow rate
- Available in engineered thermoplastics, glass tube, metal tube and teflon lined designs to cover all industrial applications
- Direct reading scales may be supplied for your actual operating conditions and your preferred engineering units

Hedland High Pressure Flow Monitors



CRN
All Canadian
Provinces and
Territories

- Indicate flow rates at liquid pressures to 6000 PSIG, gases to 1500 PSIG
- Ideal for hydraulic oils and compressed air applications

Krohne Metal Tube Purgemeters



- Monitor purge or sample flow rates at high pressures and/or temperatures
- Inlet and outlet needle valves for liquid or gas flow rate control

King Metal Tube Rotameters



CRN
All Canadian
Provinces and
Territories

- Economical metal tube rotameters
- CRN (all Canadian Provinces and Territories)

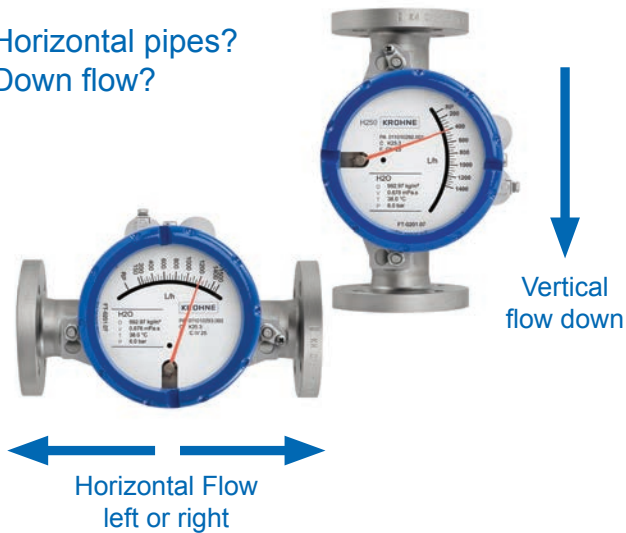
Severe Chemical or Offshore Service Rotameters



- Complete stainless steel construction
- CRN and hazardous area transmitters

Rotameters for all Flow Directions

Horizontal pipes?
Down flow?



- Piping won't permit vertical up flow?
- CRN and hazardous area transmitters

Roxspur-Platon Metal Tube Rotameters



CRN
All Canadian
Provinces and
Territories

- Flanged Meter Sizes from 1/2" to 4"
- Threaded Meter Sizes from 1/2" to 2"

8 Flow Rate Indicators (Rotameters)

Acrylic Plastic Tube Rotameters



- Ideally suited for water, water based solutions and air at low pressures
- Smaller sizes are available with inlet or outlet needle valves for flow control

Glass Tube Purgemeters

Designed for clean liquids and gasses



- Rugged glass tube purgemeters with stainless steel frame, polycarbonate shield and integral needle valves
- Measure and control purge and sample flow rates at moderate pressures / temperatures

Chemical Resistant Thermoplastic Rotameters



23 Flow Ranges

Flow Rates from 0.25 - 1000 LPM

- Engineered thermoplastic, ideal for aggressive chemicals and plastic piping systems
- Available with adjustable alarm contacts or 4-20 mA-DC transmitter

Flo-Gage™ Dial Flow Indicators



Install with flow direction in any orientation

- Unique flow monitor with easy-to-read dial indicator
- Available sizes from 1/2" to 3" threaded and 1/2" to 8" wafer flanged

Hoffer Flanged Turbine Flow Meters

Liquid • Gas



- Precision flanged turbine flow meters in sizes from 1/2" to 12", 150# to 2500# ANSI
- Digital display electronic transmitters, hazardous area design, Hart capable

The Most Versatile Flow Meter

- Liquid flow ranges from 0.015 USGPM (57 CCM) to over 12,000 USGPM (45,000 LPM)
- Gas flow ranges from 0.02 ACFM (0.034 AM³/H) to over 12,000 ACFM (20,000 AM³/H)
- Operating pressures to 20,000 PSIG
- Operating temperatures from -450°F (-268°C) to 850°F (454°C)



Hoffer Threaded / Flared Turbine Flow Meters



- NPT threaded and flared turbine flow meters from 1/4" to 6", pressures to 6000 PSIG
- Precision ceramic ball bearing for liquids and high velocity gas flows

Hoffer Wafer Style Turbine Flow Meters



- Wafer flanged turbine flow meters with full line size or reduced internals
- Low cost installation between process flanges. Flange ratings from 150# to 2500# ANSI

Hoffer Threaded Turbine Flow Meters



- Threaded MNPT from 1/2" to 6"
- Pressures to 6000 PSIG
- Higher pressures available with special connections, Autoclave®, Grayloc®, etc.

CRN
All Canadian
Provinces and
Territories

Hoffer Flanged Turbine Flow Meters



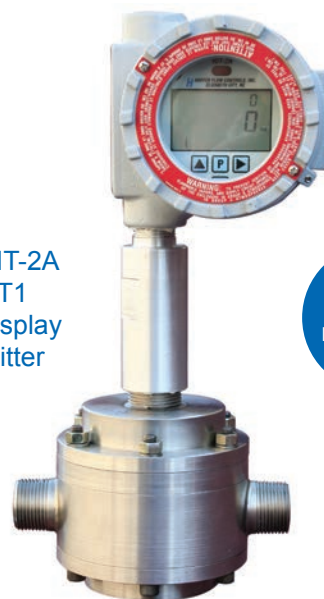
- Flanges from ANSI 150# – 2500# RF
- RTJ flanges and special flanges
- Turbine flow meter for liquids and gases

GPI Compact Turbine Flow Meters



- Sizes from 1/2" to 2" FNPT
- Lithium battery powered
- Available in brass, aluminum, PVC

Hoffer Oval Gear Positive Displacement Flow Meter



Hoffer HIT-2A
or HRT1
Digital Display
Transmitter

CRN
All Canadian
Provinces and
Territories

- Designed for viscous liquids
- Flow rates from 0.2 to 25 USGPM

Fluidwell F-Series Digital Flow Indicator/Totalizer



LCD display rating to -40°C

Very easy to program

- Lithium battery
- Pulse/analog output options
- Backlit display option
- Intrinsically safe options



Fluidwell E-Series Explosion Proof Flow Indicator/Totalizer



Flow data and event logging

Through the glass programming



Heavy duty stainless steel housing for severe chemical and offshore service

- Modbus RS485, pulse, 4-20 mA
- Easy Fluidwell program setup



Precision Digital PD6830 Flow Indicator/Totalizer

Data logging



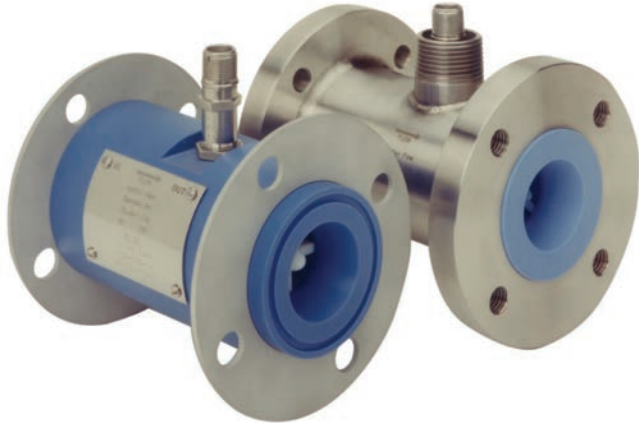
Linearization

- Explosion proof
- Modbus RS485, pulse, 4-20 mA
- Direct meter mount
- Wall mount
- 2" Pipe mount

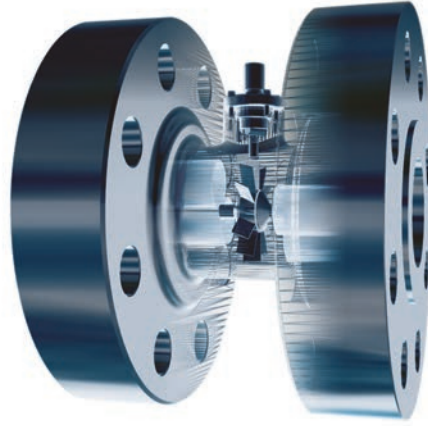
Cameron Nuflo MC-III EXP Flow Indicator/Logger/Totalizer



- Internal data logger
- Lithium battery powered
- Explosion proof

Hoffer Teflon Turbine Flow Meters

- Ideally suited for acids, chemical solutions and ultra pure water
- A unique flow metering solution in sizes from 1/4" to 3"

Hoffer Subsea Turbine Flow Meters

Hoffer offers a wide selection of application-specific subsea turbine flow meters providing critical flow data and safe subsea operation

Hoffer 1502 Wing Nut Turbine Flow Meters

Now available to 4"



- Wing nut or hammer union turbine flow meters for well completion, fracturing and high pressure applications
- Internals available for water, cement/sand slurries, and nitrogen gas, pressures to 15,000 PSIG
- Sizes 2"x1", 2"x1½", 2"x2", 3"x3", 4"x4"

Hoffer Grooved Turbine Flow Meters

- Grooved end turbine flow meters offer compact installation in sizes 2" to 12"
- Applications include water, sand/cement slurries, liquid CO₂ in well completion and well servicing applications
- Up to 3 magnetic pickups



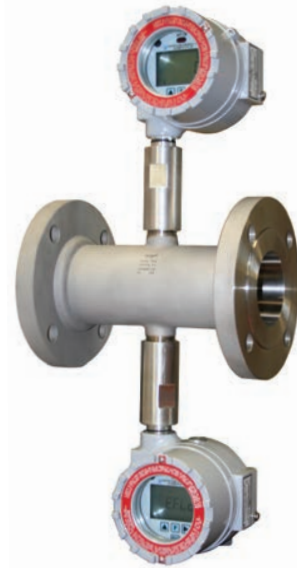
Insertion Turbine Flow Meters for Large Diameter Pipes

Special Heat Jacket Turbine Flow Meter



- Also available for cryogenic service

Turbine Flow Meter with Critical Redundant Display Transmitters



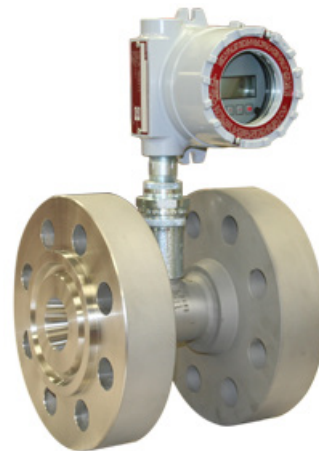
- Also available with quadrature pickups for bi-directional flow metering

Special Mini-flow Turbine Flow Meter for Extremely Low Flows at High Pressures



- Shown with high pressure meter run for installation in larger diameter pipe

Do You Have Special Turbine Flow Meter Applications?



- Don't be afraid to ask for specials, we do it all the time!
- Turbine flow meters are one of the most versatile of all available flow meters for measuring the flow of liquids or gases
- We will supply your preferred transmitter

Oval Gear Positive Displacement Flow Meters



Mechanical
manual reset
option

¼" - 4" sizes

- Oval gear meters offer accurate metering of fuels and lubricants with low pressure drops
- Accessories include pulse transmitters, and digital displays for flow rate and flow total

Liquid Transfer Flow Meters

- Positive volumetric measurement of metered liquids
- Accurate measurement to low flow rates
- Handle a wide variety of fluid viscosities
- Measure the flow of fuels, syrups, adhesives, oils, paints, ink, solvents, acids, chemicals, juices, etc.

Rotary Positive Displacement Flow Meters



- Chemical and fuel transfer
- Body materials include aluminum, ductile iron & stainless steel in sizes from 1½" to 4"
- Reset registers, ticket printers, air eliminators, preset valves, strainers

Digital Displays and Transmitters



- PD flow meters are available with a wide variety of digital displays with pulse and analog outputs
- Battery powered displays are available for installation in areas without power

Chemical Injection Flow Meters

- Low flow positive displacement flow meters for critical chemical injection flow measurement
- Confirm injection pump operation
- Account for chemical usage
- 4-20 mA/HART output with flow averaging in pulsating flow applications
- CRN registration

Spur Gear Positive Displacement Flow Meter



- High pressure spur gear positive displacement flow meter with pulse output, 4-20 mA-DC output, flow averaging
- Flow rates from 2 CCM to 75 LPM, pressures to 15,000 PSIG

Low Flow Meters with Pulse Output



- Low flow positive displacement flow meter with pulse output. Meter incorporates both reed switch and hall-effect pulse sensors
- Monitor, inject, dispense and control the flow of expensive and corrosive chemicals

Oval Gear Positive Displacement Flow Meter

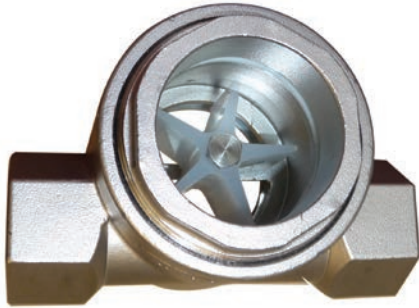


Lithium battery
powered
Intrinsically safe

- Low flow oval gear positive displacement flow meter with battery-powered intrinsically safe, digital display of rate and total
- Chemical injection and low flow rates from 8 CCM to 40 LPM



Sight Flow Indicators



Flow Rate Indicators



Turbine Flow Meters



Positive Displacement Flow Meters



www.muiscontrols.com

29 Riel Drive, St. Albert, Alberta, Canada T8N 3Z2

Phone 780-459-7080 Toll-Free 1-800-661-8823

info@muiscntrls.com