

Model Number Chart

See Example Below



Code	Base Model Number
14	1400 Series
15	1500 Series
Code	Body Material
2	Carbon Steel (Sizes ¾" to 10")
7	316 Stainless Steel (Sizes ¾" to 12")
Code	Indicator Style
0	Plain (No Indicator - Bi-Directional Flow)
1	Propeller (Rotor) (up to 4" only)
2	Flapper (Bi-Directional Flow)
3	Drip Tube
Code	Flanged Construction
F	Standard Flanged Construction
FJP	Flanged Construction (Length to Match Jacoby Tarbox & Penberthy)
Code	Connection Size
0075	¾" (FJP only) ANSI 150# RF Flange
0100	1" ANSI 150# RF Flange
0150	1½" ANSI 150# RF Flange
0200	2" ANSI 150# RF Flange
0300	3" ANSI 150# RF Flange
0400	4" ANSI 150# RF Flange
0600	6" ANSI 150# RF Flange
0800	8" ANSI 150# RF Flange
1000	10" ANSI 150# RF Flange
1200	12" ANSI 150# RF Flange
Code	Seal Material
BN	Buna-N
EP	EPT
NP	Neoprene
TF	Teflon
VT	Viton (Standard)

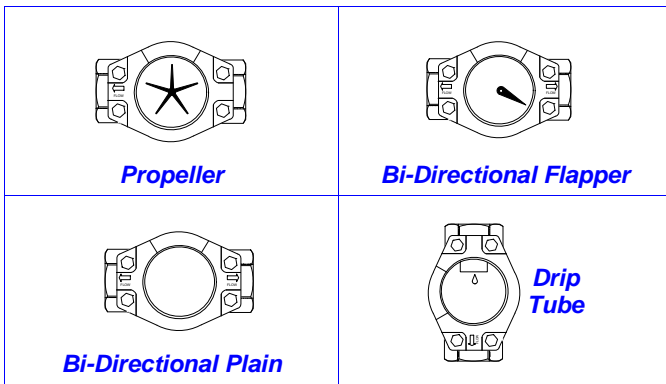
Features

- Full ANSI service ratings
- Maintenance-free design
- Rated for full vacuum services
- Four indicator styles; drip tube, propeller, bi-directional flapper, bi-directional plain
- Dimensionally interchangeable

15 7 1 F - 0300 - VT ◀ Typical Model Number

Construction and Material

Body:	Steel 316 Stainless Steel	ASTM A216 WCB ASTM A351 CF8M*
	* 6" and larger ASTM A351 CF3M (316L) Optional Materials: Hastelloy, Alloy 20, Monel, Others upon request	
Windows:	1400 Series 1500 Series	Tempered Soda Lime Glass* Tempered Borosilicate Glass * Annealed Borosilicate glass used on sizes 3" and above
Indicators Elements:	1400 Series 1500 Series	Delrin Flapper or Rotor Ryton Flapper or Rotor
	Optional Materials: Teflon	
Seals:	1400 Series 1500 Series	Viton (Standard) Viton (Standard)
	See table for additional seal options	
Connections:	Steel 316 Stainless Steel	ANSI B16.5 150# RF Flange ANSI B16.5 150# RF Flange
Options:	Protective Shield (1400SK) Polycarbonate Pressure / Temperature Probe: Consult Muis Controls	



Seal and Indicator Operating Temperatures

Material	°F	°C
Seals		
Neoprene (Optional)	-20 to 250	-29 to 121
Viton (Standard)	0 to 350	-17 to 177
Buna-N (Optional)	-30 to 250	-29 to 121
EPT (Optional)	-20 to 250	-29 to 121
Teflon (Optional)	-40 to 450	-40 to 232
Indicators		
Delrin (1400 Series Standard)	-40 to 250	-40 to 121
Ryton (1500 Series Standard)	-40 to 450	-40 to 232
Teflon (Optional)	-40 to 450	-40 to 232

Standard Ratings / Components

Series	End Connections	Max ANSI Pressure	Max Temperature	Glass	Seals	Indicator Material
1400	Flanged 6" to 12" *	150 PSIG @ 150°F	150°F @ 150 PSIG	Tempered Soda Lime ³	Viton	Delrin
	Flanged 1/4" to 4" *	200 PSIG @ 150°F	250°F @ 135 PSIG			
1500	Flanged (Carbon Steel)*	285 PSIG @ 100°F	350°F @ 215 PSIG	Tempered Borosilicate		Ryton
	Flanged (SS)*	275 PSIG @ 100°F	350°F @ 205 PSIG			

³ Annealed Borosilicate used on sizes 3" and above

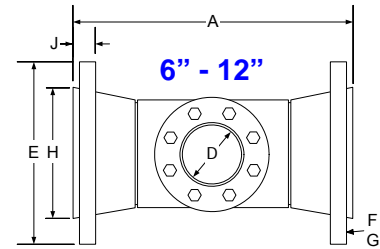
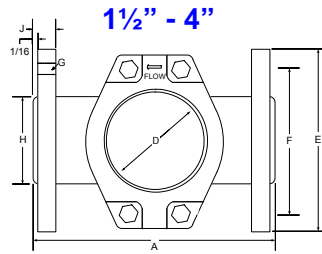
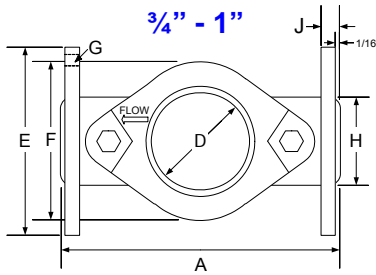
* with standard seals, temperatures up to 500°F possible with High Temp PTFE Seals

Pressure / Temperature Ratings*

Flanged 1400 Series (Std. Press. / Temp.)		
Temperature		PSIG (Barg)
(F)	(C)	Steel & 316 SS
-20 to 150	-29 to 65	200 (13.8)
200	93	165 (11.4)
225	105	150 (10.3)
250	121	135 (9.3)
<i>With Optional Seals (see below)</i>		
300	149 (6.9)	100 (6.9)
350	177 (4.8)	70 (4.8)
400	204 (2.4)	35 (2.4)

* For higher pressures and temperatures consult Muis Controls

Flanged 1500 Series (Std. Press. / Temp.)			
Temperature		PSIG (Barg)	
(F)	(C)	Steel	316 SS
-20 to 100	-29 to -38	285 (19.7)	275 (19.0)
150	65	270 (18.6)	255 (17.6)
200	93	260 (17.2)	240 (16.6)
225	105	250 (16.8)	230 (15.9)
300	149	230 (15.9)	215 (14.8)
350	177	215 (14.8)	205 (14.4)
<i>With Optional Seals (see below)</i>			
400	204	200 (13.8)	195 (13.4)
450	232	185 (12.8)	180 (12.4)
500	260	170 (11.7)	170 (11.7)



Dimensions and Weights

	3/4"		1"		1 1/2"		2"		3"	
	in.	mm	in.	mm	in.	mm	in.	mm	in.	mm
A Overall Length (Standard)	Specify "FJP"		5	127	6 1/2	165	7	178	8	203
"FJP" Option	4 5/8	117	Not Available		Same as Above		7 7/8	200	9 3/8	238
D Diameter of Sight Opening	1 1/2	38	1 1/2	38	2	51	2	51	3	76
E Flange Diameter	3 7/8	98	4 1/4	108	5	127	6	152	7 1/2	191
F Bolt Circle Diameter	2 3/4	70	3 1/8	79	3 7/8	198	4 3/4	121	6	152
G (#Bolt Holes) Size	(4) 5/8	(4) 16	(4) 5/8	(4) 16	(4) 5/8	(4) 16	(4) 3/4	(4) 19	(4) 3/4	(4) 19
H Diameter of Raised Face	1 11/16	43	2	51	2 7/8	73	3 5/8	92	5	127
J Thickness of Flange	1/2	13	15/32	12	19/32	15	11/16	17	13/16	21
Total Wgt. (lbs / kgs) approx.	5.2 / 2.4		5.4 / 2.5		11.1 / 5.0		15 / 6.8		29.3 / 13.3	

Specify "FJP" option only if Face-to-Face dimension must be the same as Jacoby Tarbox or Pemberthy on 3/4", 2", 3" or 4" models.

	4"		6"		8"		10"		12"	
	in.	mm	in.	mm	in.	mm	in.	mm	in.	mm
A Overall Length (Standard)	9	229	14 1/4	362	16 5/8	410	16 5/8	410	17 5/8	435
"FJP" Option	11	279	Same as Above		Same as Above		Same as Above		Same as Above	
D Diameter of Sight Opening	3	76	4	102	4	102	4	102	4	102
E Flange Diameter	9	229	11	279	13 1/2	343	16	406	19	483
F Bolt Circle Diameter	7 1/2	191	9 1/2	241	11 3/4	298	14 1/4	362	17	432
G (#Bolt Holes) Size	(8) 3/4	(8) 19	(8) 3/4	(8) 19	(8) 3/4	(8) 19	(12) 7/8	(12) 22	(12) 7/8	(12) 22
H Diameter of Raised Face	6 7/16	157	8 1/2	216	10 5/8	270	12 3/4	324	15	381
J Thickness of Flange	1	25	1	25	1 1/8	29	1 3/16	30	1 1/4	32
Total Wgt. (lbs / kgs) approx.	35 / 15.9		85 / 38.6		125 / 56.7		165 / 75		250 / 114	

Specify "FJP" option only if Face-to-Face dimension must be the same as Jacoby Tarbox or Pemberthy on 3/4", 2", 3" and 4" models.

Muis Controls Ltd. - Flow Meters · Flow Controls

29 Riel Drive, St. Albert, AB, Canada T8N 3Z2

Ph +1-780-459-7080 Fx +1-780-459-7085 Toll Free 1-800-661-8823

www.muiscontrols.com info@muiscontrols.com